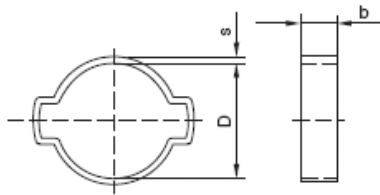
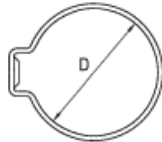


## Ear Clips Standard S10(W1) and Stainless S40(W4)



S10, S40



Ear Clips are available in galvanized steel.  
Application tools are available, see page 37.

1 Ear Clip			
Clamping range D	b	s	S40
9-11	6,5	0,8	0,8
10-12			
11-13			
12-14	7	1	1
14-16		1,1	
16-18		1,2	

2 Ear Clip			
Clamping range D	b	s	S40
5-7	6	0,8	0,6
7-9		0,6	0,8
9-11	6,5	0,8	
11-13		0,9	
13-15	7	1,0	1
14-17		1,2	
15-18	7,5		
17-20			
18-21	8		
20-23		1,3	
22-25	8,5	1,4	1,2
23-27			
25-28	9		
28-31			
31-34	9,5		
34-37		1,6	
37-40	10		